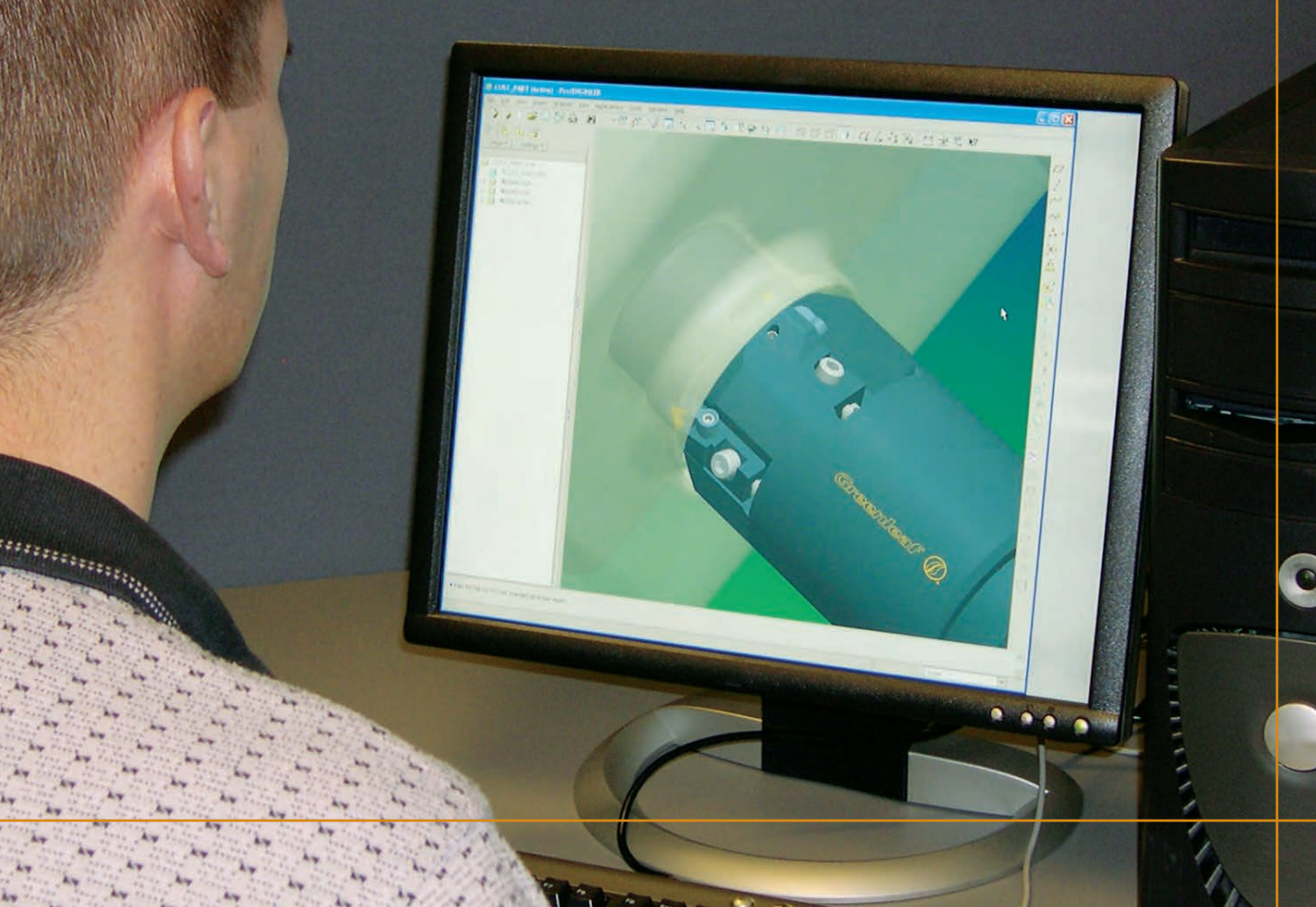




INTRODUCTION	
MILLING	
TURNING AND BORING	
HEAVY TURNING	
GROOVING, PROFILING AND CUT-OFF	
API RING-GROOVE MACHINING	
INDEXABLE DRILLING	
TUBE SCARFING	
SPECIAL ENGINEERING	
APPLICATION and TECHNICAL INFORMATION	

2016

SPECIAL ENGINEERING



*Aerospace Tools
Milling Cutters
Special Inserts
Special Designs/Layouts*

Special Tool Design Information Checklist



Special Engineering

Greenleaf Corporation is a leading supplier of cutting-tool technology, specializing in the manufacture of high-performance tungsten carbide and ceramic inserts, as well as inventive tool-holding systems. Greenleaf continues to build on 60 years of innovation which centers on supplying customers with productive solutions to their metalcutting needs.

Today, Greenleaf Corporation is positioned to serve the evolving needs of companies in all major segments of the metalcutting industry including gas turbine, steel, medical, roll turning, automotive, machine tools and rail. Greenleaf's products are engineered to provide optimal performance against a wide range of materials under the most rigorous metalcutting conditions.

Special engineered or custom engineered products is a visible strength of the Greenleaf product line. Customers from around the world utilize the Greenleaf engineering services to address their specific, and often complex, requirements. For example, a cantilevered heavy metal head (*pictured at right*) was held to ± 0.012 inch tolerance for a VTL in the aerospace industry. Ask us to determine if we can assist you in your cutting tool special requirements.

In addition to specially engineered tooling systems and a comprehensive line of carbide inserts, Greenleaf offers high-quality ceramic and ceramic-composite materials which can be custom designed for specific machining applications.

From its headquarters in Saegertown, Pennsylvania, and a facility in North Carolina, Greenleaf maintains its commitment to pioneering breakthroughs in cutting-tool technology and to delivering **Excelerated** solutions for customers around the world.



Bar Peeler Cartridge



KM and Capto Shank



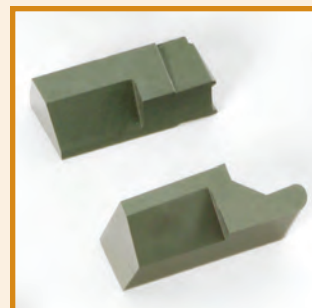
Heavy Metal Head



Keyslot



Quick Change Roll Tool



Race Track Groovers



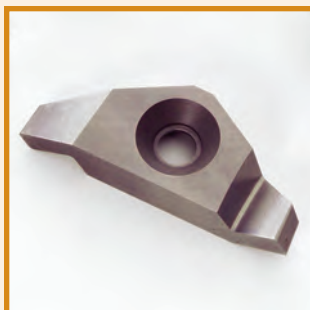
Roll Turning

Greenleaf Sales

Phone: 814-763-2915 • 800-458-1850 • Fax: 814-763-4423
sales@greenleafcorporation.com • www.greenleafglobalsupport.com



Dovetail Cutter



Heligroove Group



Hogmill



Hook Groove Holder



Long Shaft End Mill



Plungeface Cutter



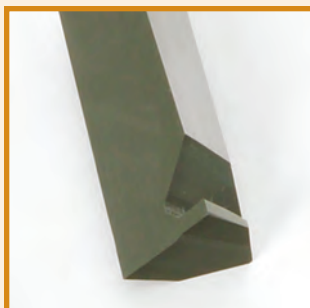
Pod Bore Head



Special Form Insert



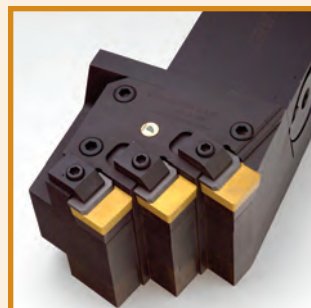
Roll Lathe Tool



V-Bottom



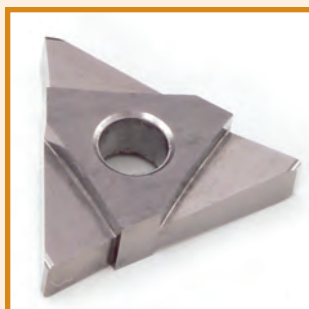
Aero Grooving Tools



Roll Turning Tool



Heavy Turning



Tri-Thread Groover



Powerlock® Grooving Inserts

Greenleaf Sales

Phone: 814-763-2915 • 800-458-1850 • Fax: 814-763-4423
sales@greenleafcorporation.com • www.greenleafglobalsupport.com



FOR FAST QUOTE, complete form and send
via **EMAIL**
engineering@greenleafcorporation.com
via **FAX**
814-763-4040

Special Tool Design Information Checklist



☐ Operation Information

Specify Operation: ☐ Milling ☐ Turning ☐ Boring ☐ Other: _____
Hand of Tool: ☐ Right Hand ☐ Left Hand ☐ Neutral

Specify size and style of mounting bore or shank: _____

☐ Machine Information

Type of Machine: _____ Horsepower or KW: _____
Condition: ☐ New ☐ Good ☐ Fair ☐ Poor

☐ Part Information:

Part Name: _____ Part End Use: _____

Part Material: _____ Hardness: _____ Condition: _____

☐ Furnish part drawing. *(Note areas to be machined and specify centerline of tool along with direction of feed and rotation.)*

☐ Furnish IGES or DXF file of part drawing if a tool layout is being requested.

☐ Furnish process sheets if available.

☐ Furnish digital photos of art or machine mounting if possible.

☐ Quote quantities: Tooling: _____ Inserts: _____

If parts are currently being machined, please complete this section:

☐ Furnish drawings, sketch or sample of existing tools.

☐ Describe problems with existing tools: _____

☐ Specify preferred insert style, grade, and edge prep: _____

Additional comments: _____

Company _____

Customer Number _____

Attention _____

Customer Inquiry Number _____

Street _____

Ship to City _____ Country _____

City _____ State _____ Zip Code _____

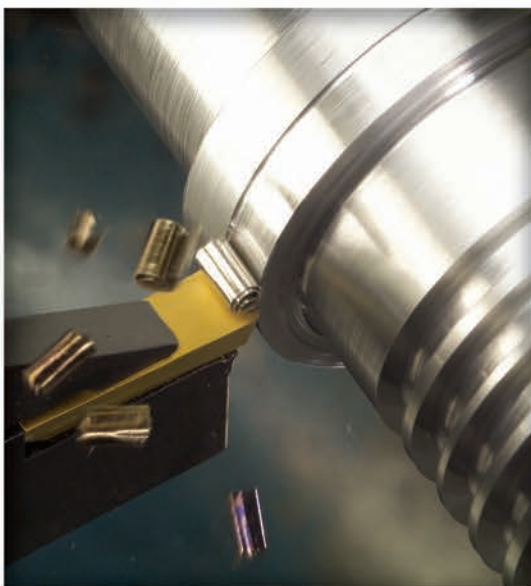
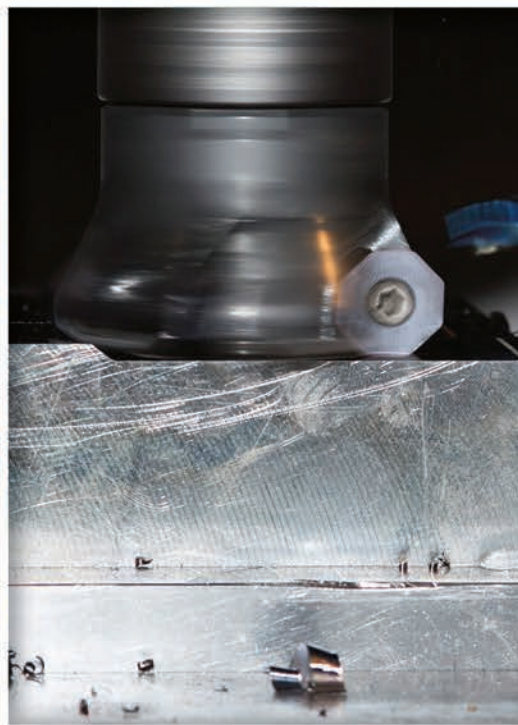
Send Copy to _____

Phone _____ FAX _____

Email _____ Sales Rep _____

Date Received _____

Quote
Due Date



MADE IN THE USA

Greenleaf Corporation
is ISO 9001 Certified.

GREENLEAF CORPORATION

18695 Greenleaf Drive
PO Box 1040
Saegertown, PA 16433 USA
US Phone: +1-814-763-2915
sales@greenleafcorporation.com

GREENLEAF EUROPE BV

De Steeg 2
6333 AP Schimmert
The Netherlands
EU Phone: +31-45-404-1774
eurooffice@greenleafcorporation.com

GREENLEAF (HUNAN) HIGH-TECH MATERIALS CO., LTD.

6F, Building C1, Lu Gu Com-Park
No. 27 Wenxuan Road
High-Tech Zone
Changsha, Hunan 410205
China
CN Phone: +86-731-89954796
info@greenleafcorporation.com.cn